

## Making a rescue SD

This Chapter will explain how to install the rescue image (factory default) on your board.

### Making the SD-card with the rescue image in a Windows environment

Download the image and extract it on your computer

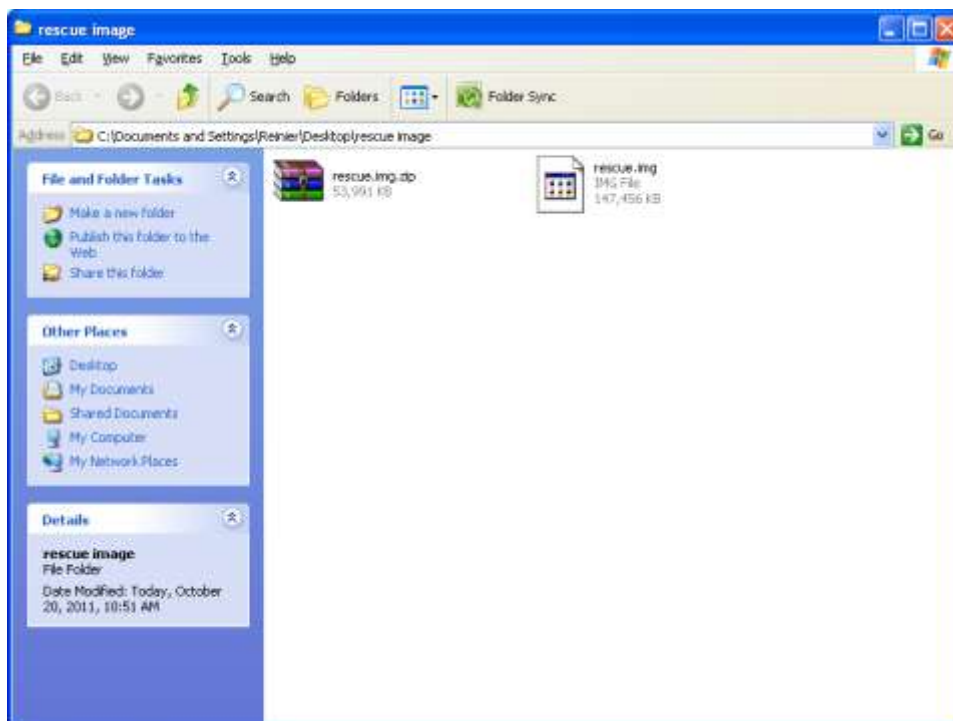


Figure 1: After extraction

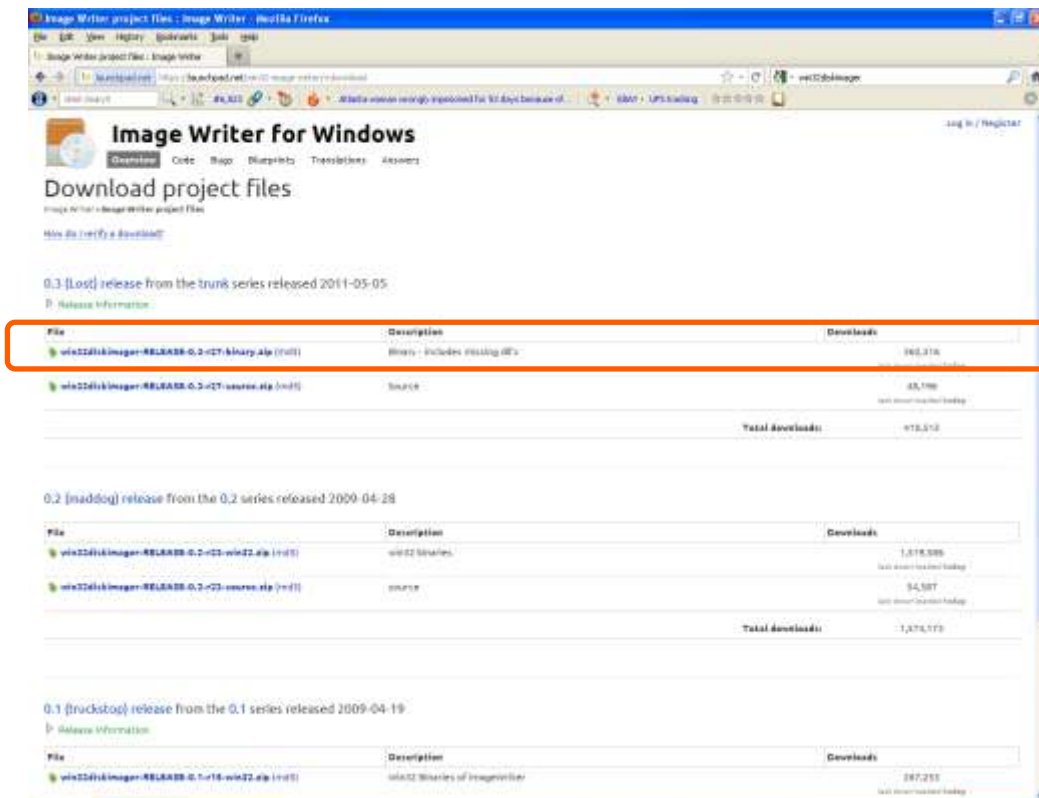


Figure 2: Download a disk imager on your computer (for example: launchpad.net)

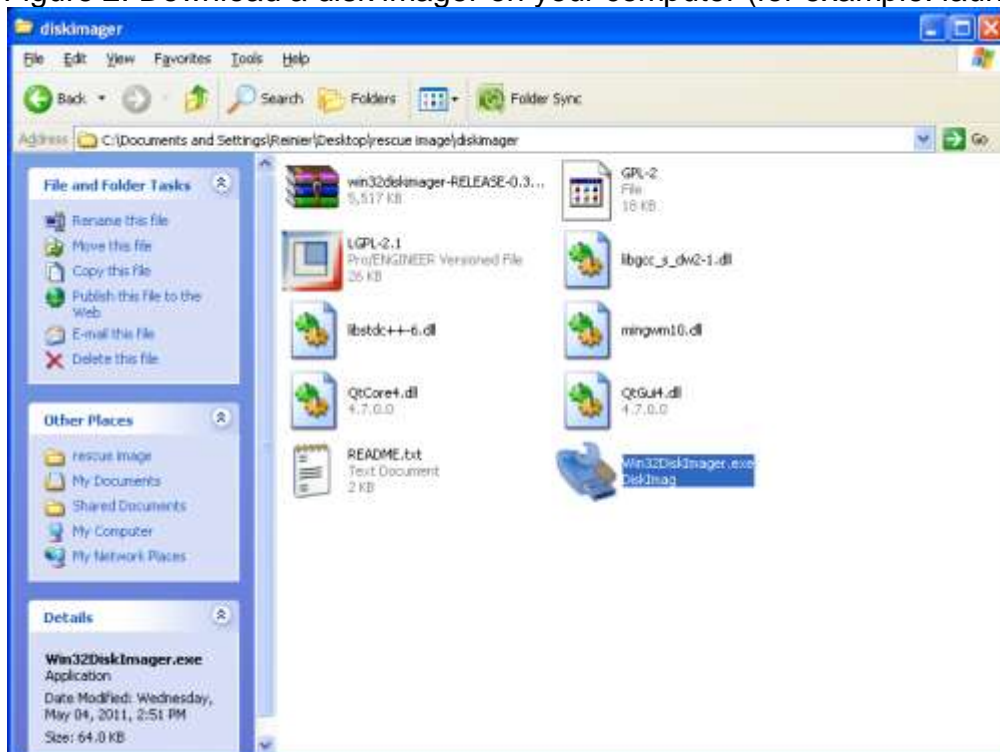


Figure 3: Run the disk imager

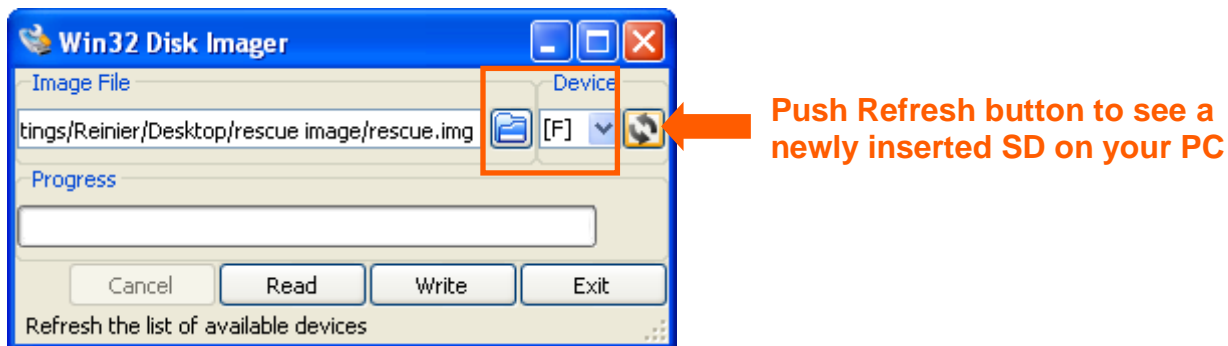


Figure 4: Select the SD-card as device

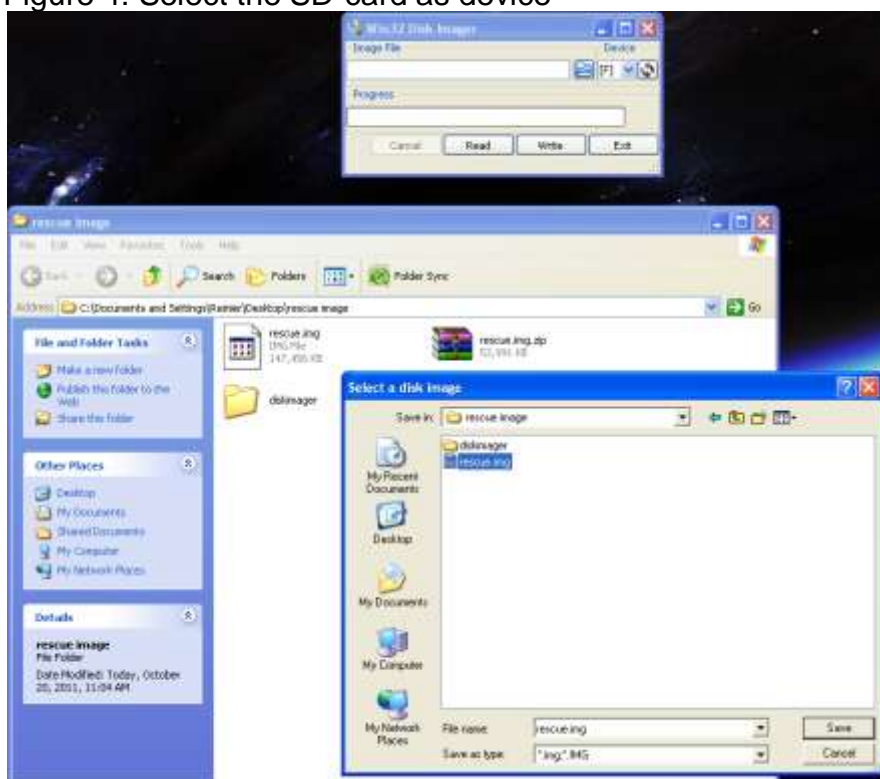


Figure 5: Browse to the image file

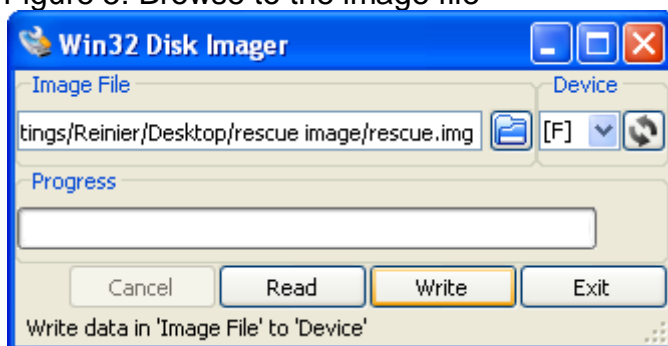


Figure 6: Click write to write the image to your SD-card

## Making the SD-card with the rescue image in a Linux environment

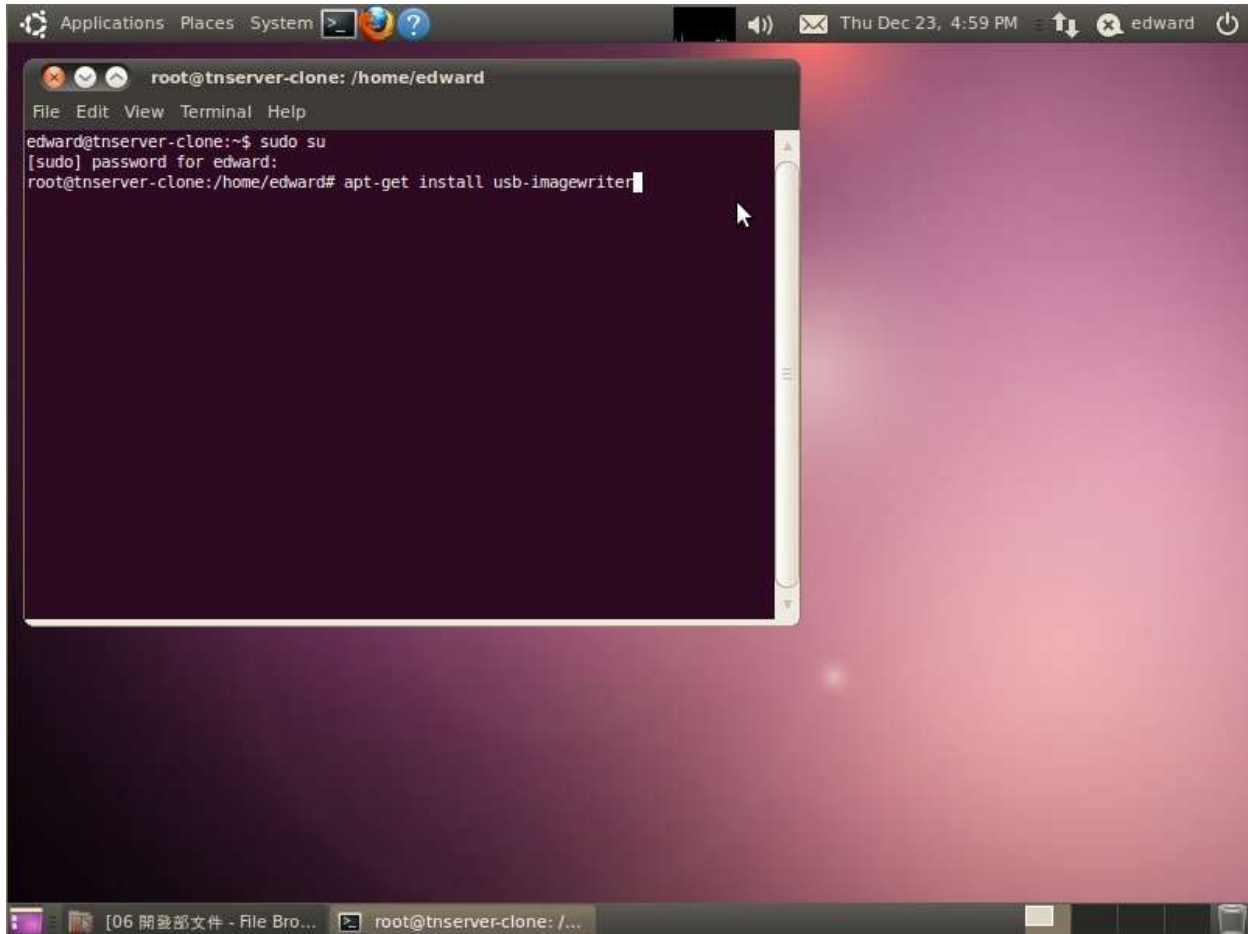


Figure 7: Download the image and install the image writer on your computer



Figure 8: Start image writer



Figure 9: Select image and destination (SD-card), click write to device



Figure 10: Confirm OK

## Installing the rescue image on the baseboard with the SD-card



**Warning!** Be patient: The following procedure will take **5 minutes** to complete.

Put the SD-card in your board and reboot. The screen will show the following information (See Figure 11 to 14) and after **5 minutes** will show installation complete (See Figure 14), which means the software is installed.

(**Take out the SD card** and then reboot again. It will now show the rescue software.)

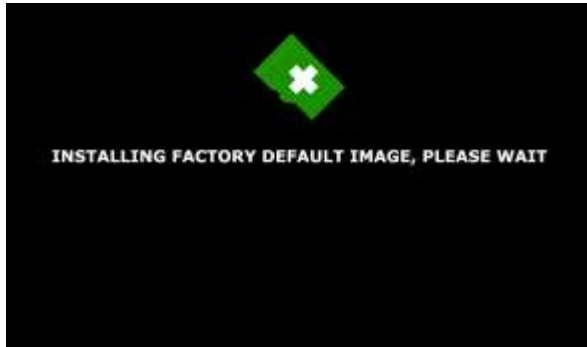


Figure 11: Installing the rescue image (factory default)

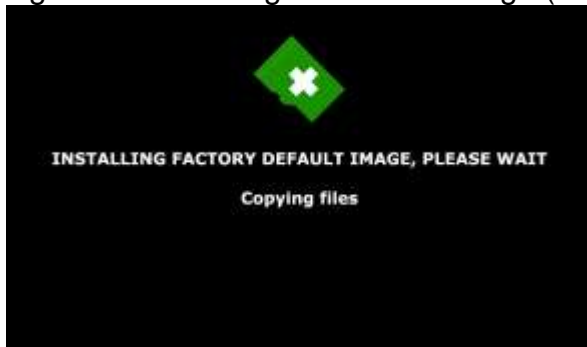


Figure 12: Installing the rescue image – Copying files

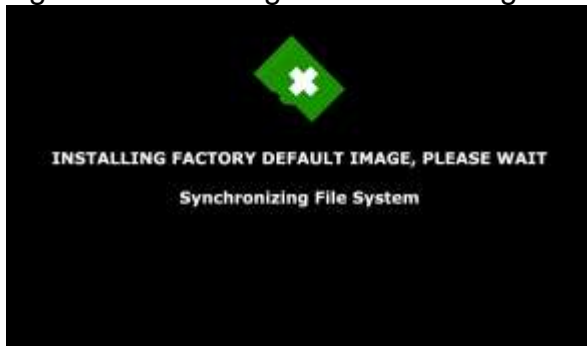


Figure 13: Installing the rescue image – Synchronizing File System

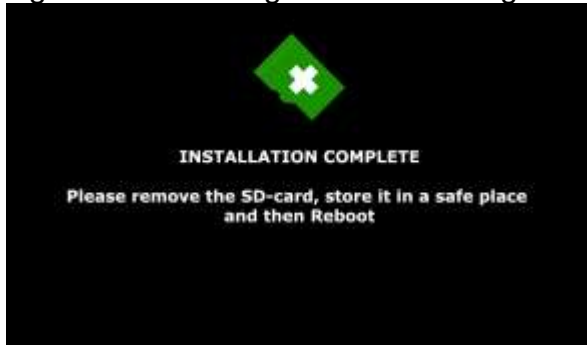


Figure 14: Installation complete - **Take out the SD card** and then reboot again. It will now show the rescue image.